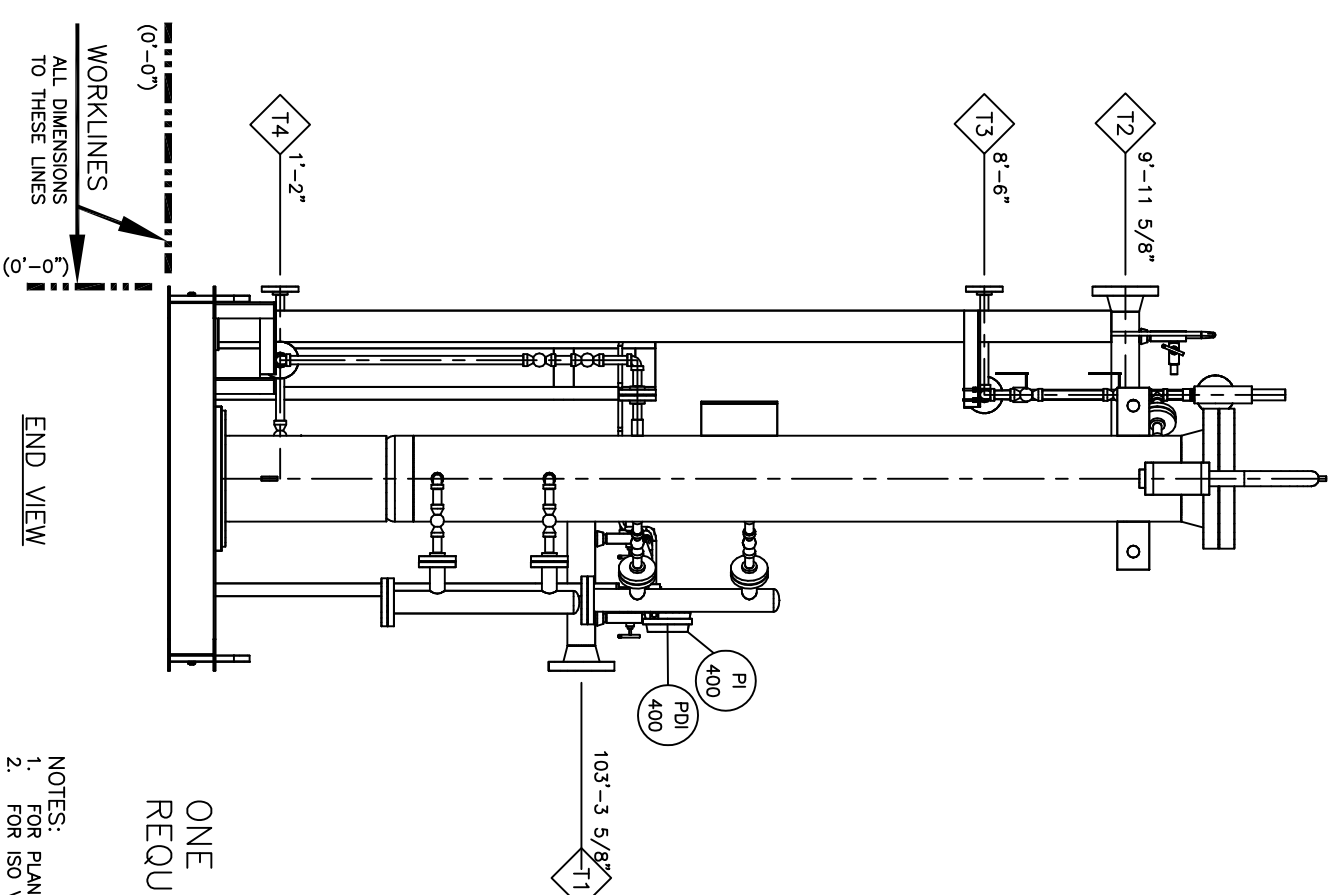
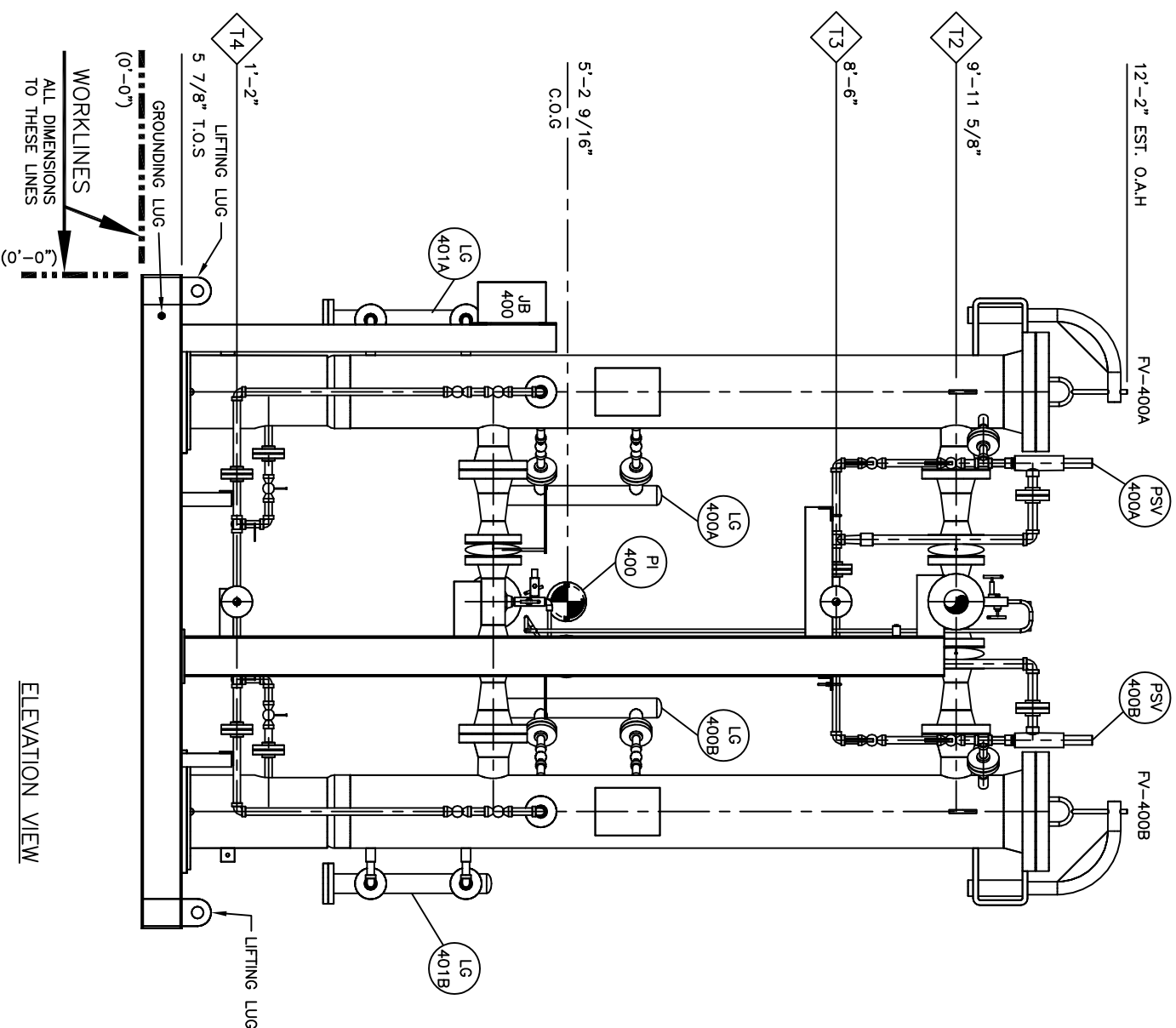



TIE IN SCHEDULE	
MK	SIZE/TYPE
T1	3"-300#-RF C.S
T2	3"-300#-RF S.S
T3	3/4"-300#-RF C.S
T4	3/4"-300#-RF C.S



ONE (1) SKID SHOWN, TWO (2) REQUIRED

- NOTES:
1. FOR PLAN VIEW SEE DWG. NO.: G-24877-01.
  2. FOR ISO VIEW SEE DWG. NO.: G-24877-03.
  3. ALL DIMENSIONS  $\pm 1/4"$
  4. THE INSTRUMENTS AND EQUIPMENTS TAGS FOR ONE SKID WILL BE 400 AND THE OTHER 500.

<div><div><b>INTEGRATED FLOW SOLUTIONS</b></div><div>6461 REMONOLDS RD. TYLER, TEXAS, USA 75708 PHONE NUMBER: +1 (903) 595-6511 FAX NUMBER: +1 (903) 595-4861</div></div> <div>THIS DRAWING IS THE PROPERTY OF INTEGRATED FLOW SOLUTIONS AND SHALL NOT BE REPRODUCED, COPIED, LENT, NOR USED FOR ANY PURPOSE OTHER THAN THAT WHICH IT IS FURNISHED EXCEPT BY WRITTEN PERMISSION.</div>																			